



2-STOREY
TOWNS

THE LEVI
3 BEDROOM ~ 1,942 SQ. FT.



**2-STOREY
TOWNS**

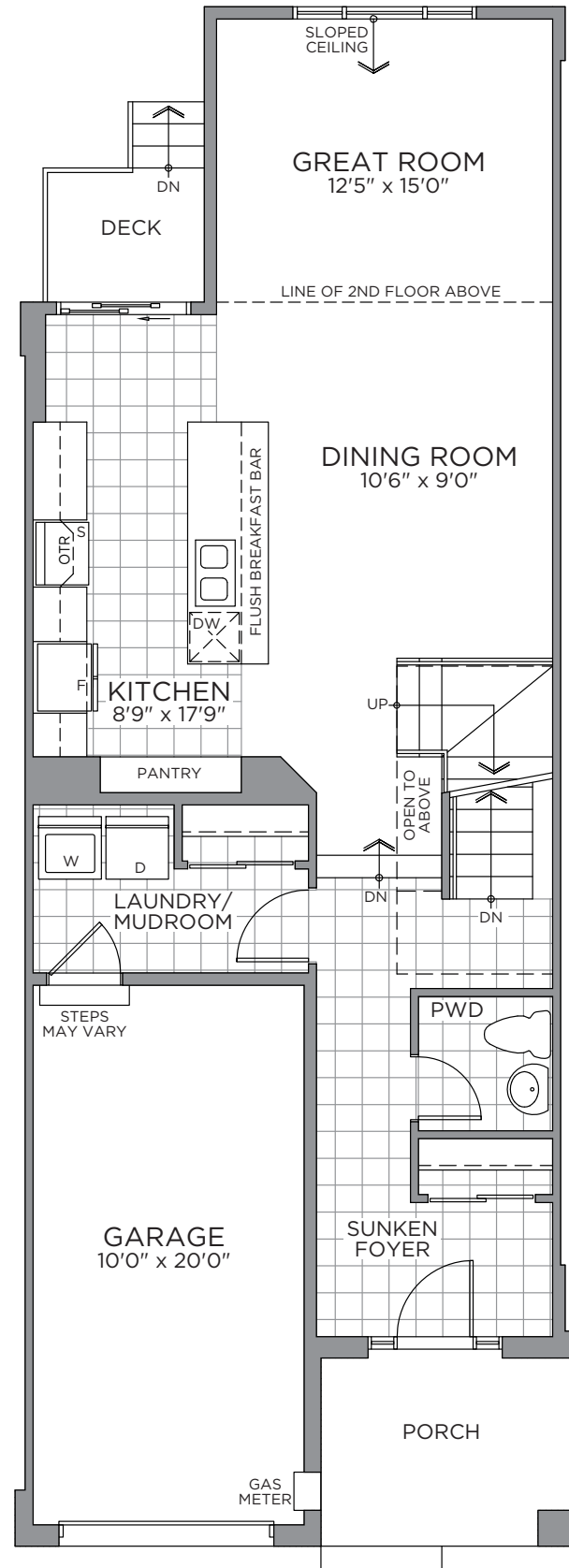
THE LEVI ~ 1,942 SQ. FT.

WITH 317 SQ. FT. FINISHED BASEMENT

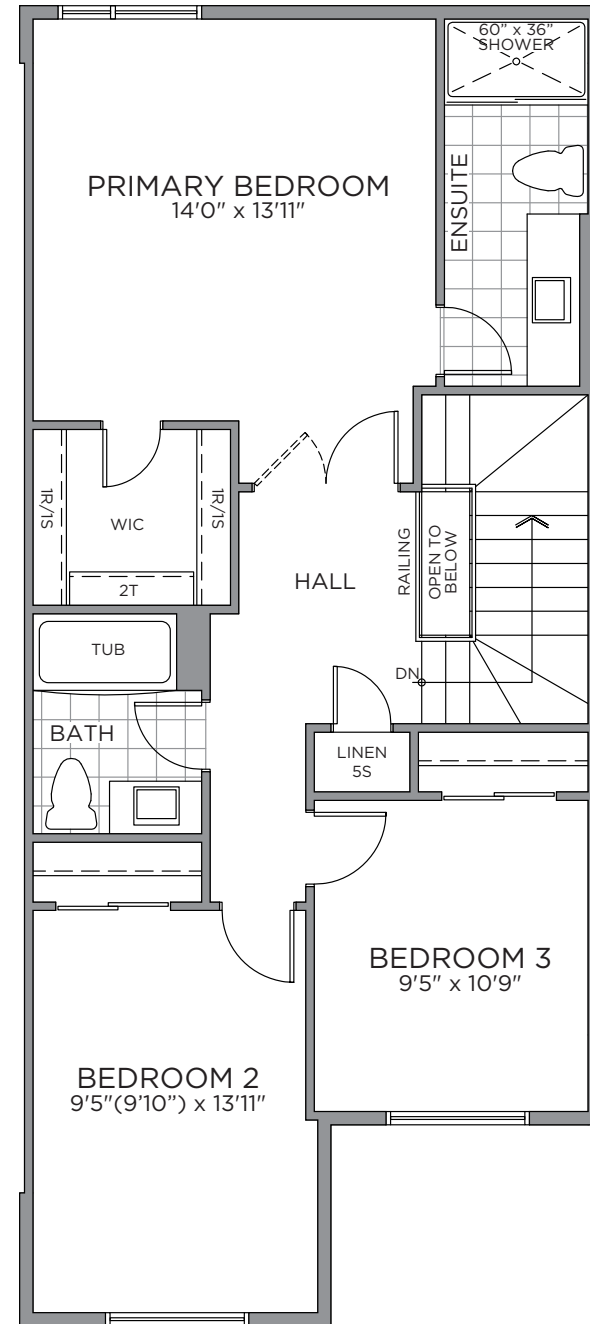


ELEVATION A

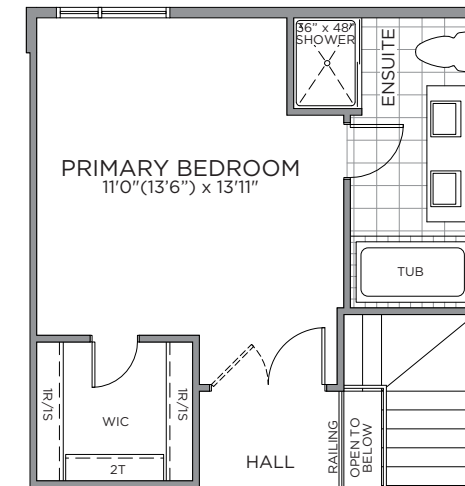
ELEVATION M



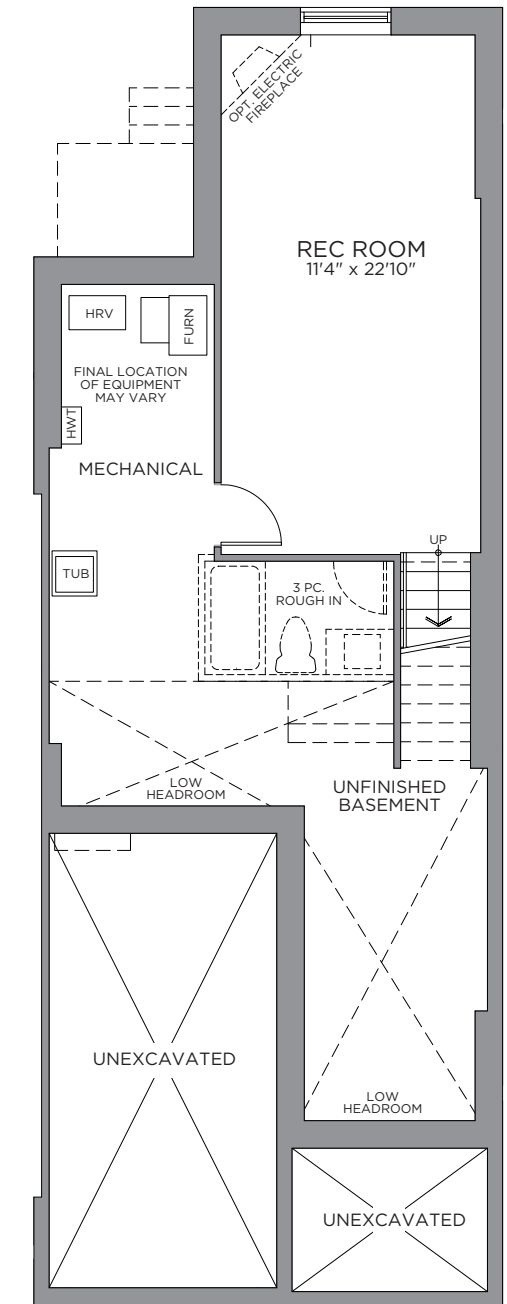
GROUND FLOOR



SECOND FLOOR



**OPTIONAL SECOND FLOOR
PRIMARY ENSUITE**



FINISHED BASEMENT

*Front window and porch sizing/locations vary based on elevations, see agent for detailed drawings. ** Sump pump is for eQuinelle only. Prices, dimensions and specifications are subject to change without notice. All renderings are artist's concept. E. & O.E. February 2023.

